



## Keep Your Labels Compliant

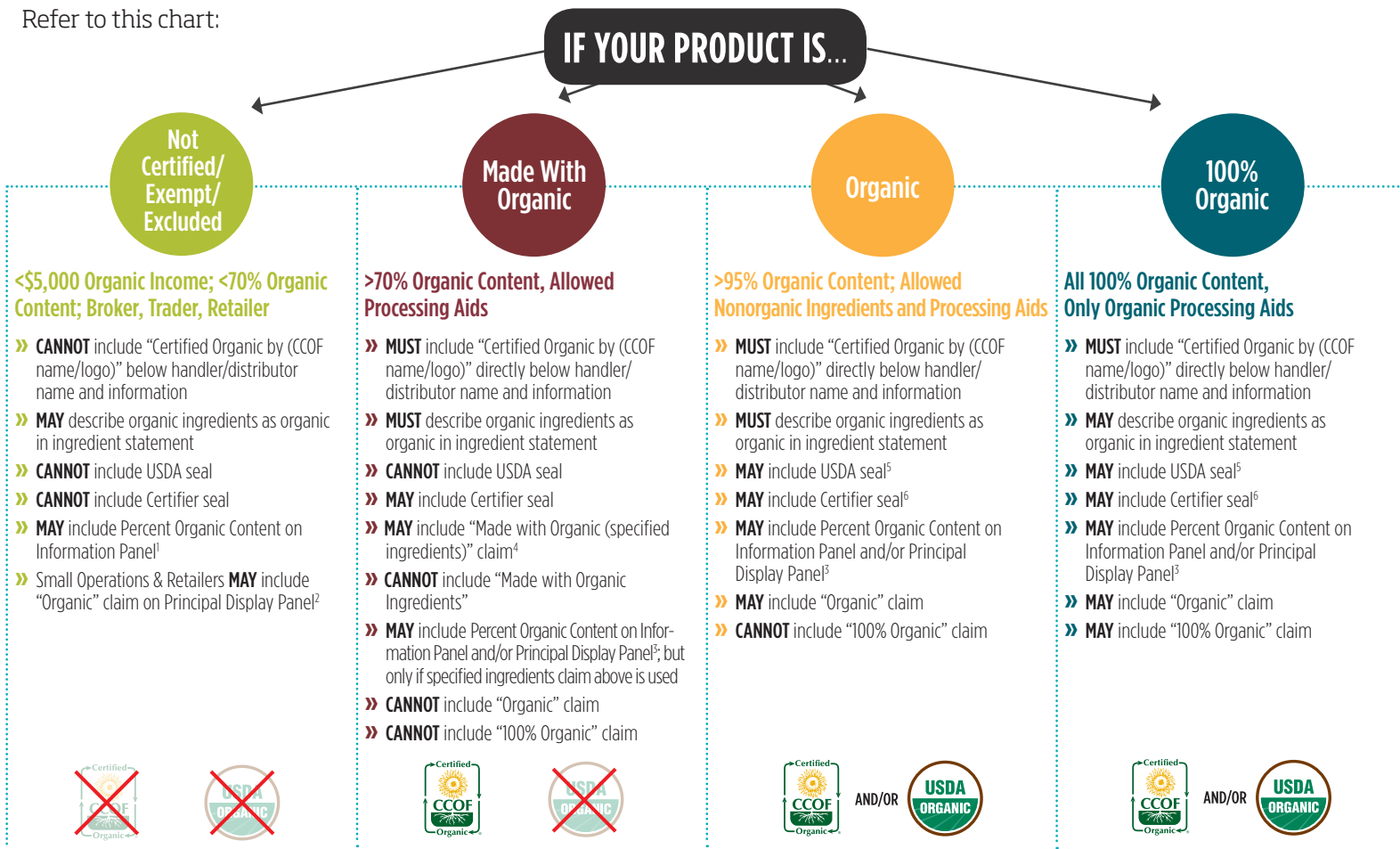
# ORGANIC LABELING GUIDELINES

### For All Labels

For complete organic labeling regulations, please refer to Sections §205.303, §205.304, §205.307 and §205.311 of the USDA Organic Standards. All labels must be approved by CCOF.

### For Retail Labels

Refer to this chart:



### For Wine Labels

Unique requirements apply. Visit [www.ccof.org](http://www.ccof.org) and search "Wine Labeling Guide."

### For Nonretail Containers

Nonretail containers include produce boxes, bulk products, etc. The following applies to containers for products certified as either "Organic" or "100% Organic."

- » **MUST** display production lot number if the operation uses a lot numbering system.
- » **MAY** include "Certified Organic by CCOF," the USDA seal<sup>3</sup>, the Certifier seal<sup>6</sup>, and/or the appropriate organic claim. Use of these elements is encouraged to ensure identification of organic products.

<sup>1</sup>Only applies to products with <70% organic content, if they also identify ingredients as organic. §205.101(a)2; §205.305(a)2

<sup>2</sup>Only applies to products produced by an operation that makes less than \$5,000 a year organic income, or is excluded, or is a retail establishment that does not process organic products (grocery departments); or a handling operation that processes ready-to-eat foods (retail deli). §205.101(a)1

<sup>3</sup>The size of the percentage statement must not exceed one-half the size of the largest type size on the panel on which the statement is displayed and must appear in its entirety in the same type size, style, and color without highlighting. §205.303(a)2; §205.304(a)2

<sup>4</sup>Cannot list more than three organically produced ingredients or food groups; such as: beans, fish, fruits, grains, herbs, meats, nuts, oils, poultry, seeds, spices, sweeteners, and vegetables or processed milk products; letters cannot exceed one-half the size

of the largest type on the panel and which appears in its entirety in the same type size, style and color without highlighting. §205.304(a)1

<sup>5</sup>The USDA seal must replicate the form and design as shown above and must be printed: on a white background with a brown outer circle and with the term, "USDA," in green overlaying a white upper semicircle and with the term, "organic," in white overlaying the green lower half circle; or on a white or transparent background with black outer circle and black "USDA" on a white or transparent upper half of the circle with a contrasting white or transparent "organic" on the black lower half circle. The green or black lower half circle may have four light lines running from left to right and disappearing at the point on the right horizon to resemble a cultivated field. §205.311(b)

<sup>6</sup>If displaying both the USDA seal and the Certifier seal, the USDA seal must be more prominent. §205.303(a)5